

## The Mediterranean Border

A warm lavender, hot pink and purple planting scheme in this striking continental, Mediterranean garden.

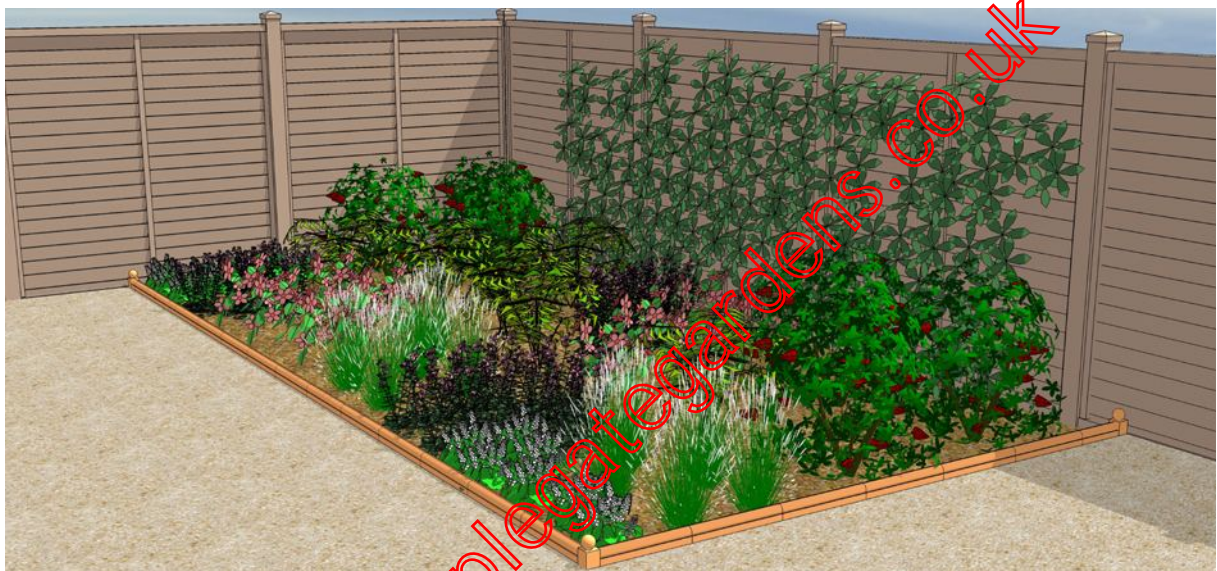
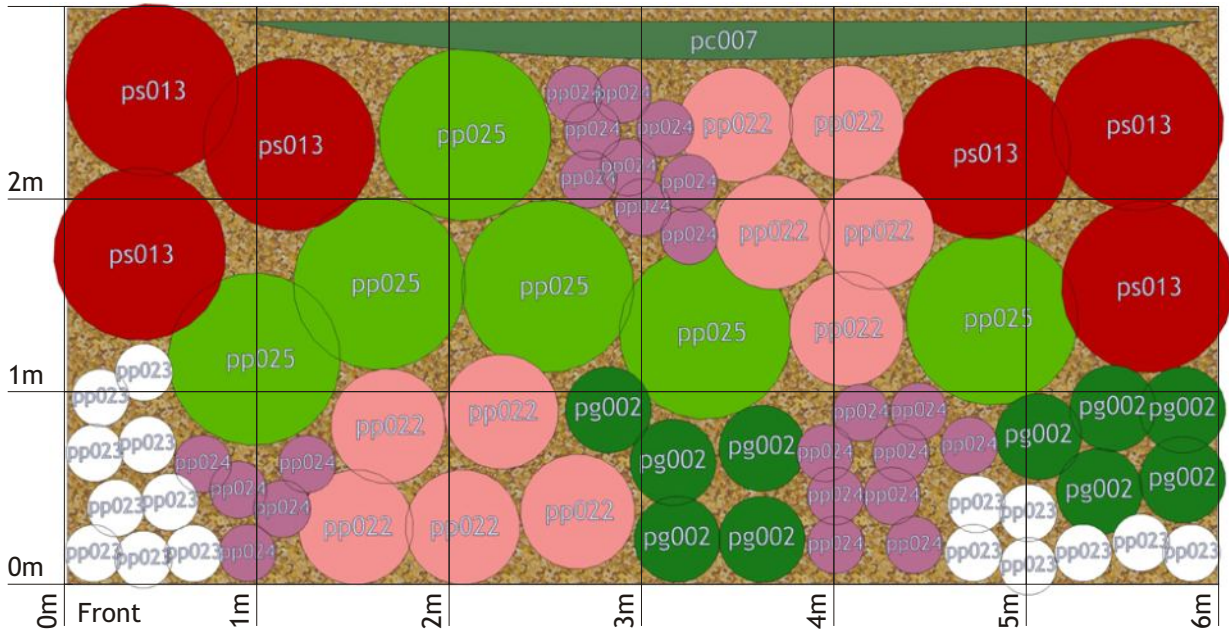
Use the Planting Plan to position your plants, and the table on the right to cross-refer to the separate Planting List on our website.

**CLICK HERE** to buy plants online for home delivery...

AG Code	Plant Common Name	Quantity
pc007	Chinese Virginia Creeper	1
ps013	Skimmia	6
pp022	Balkan Crane's Bill	10
pp023	Foam Flower	16
pp024	Toad Lily	23
pp025	Hard Shield Fern	6
pg002	Snowy Woodrush	10

3m Back

Climber trained on fence, wall or trellis



## your Planting Design

This border has been planned around future growth and spread. To use this design for smaller areas, starting from the bottom left-hand corner, draw your actual area onto the plan, and omit any plants outside this new size.

STYLE Mediterranean Planting Design		SIZE 6m x 3m	Plot to Scale
SOIL TYPE Loam	SUNLIGHT Full Shade	REF. FD_smed_sh63lo_1	

- ! Use the blanks in the table for any plant substitutions you make.
- ! Use the width & depth scale bars and grid to assist in positioning the plants.
- ! See the separate Planting List for more details on each of your plants.