

The Classic Border

A subtle palette of yellow, blue and green planting with evergreen plants, look great all year round in a classic garden.

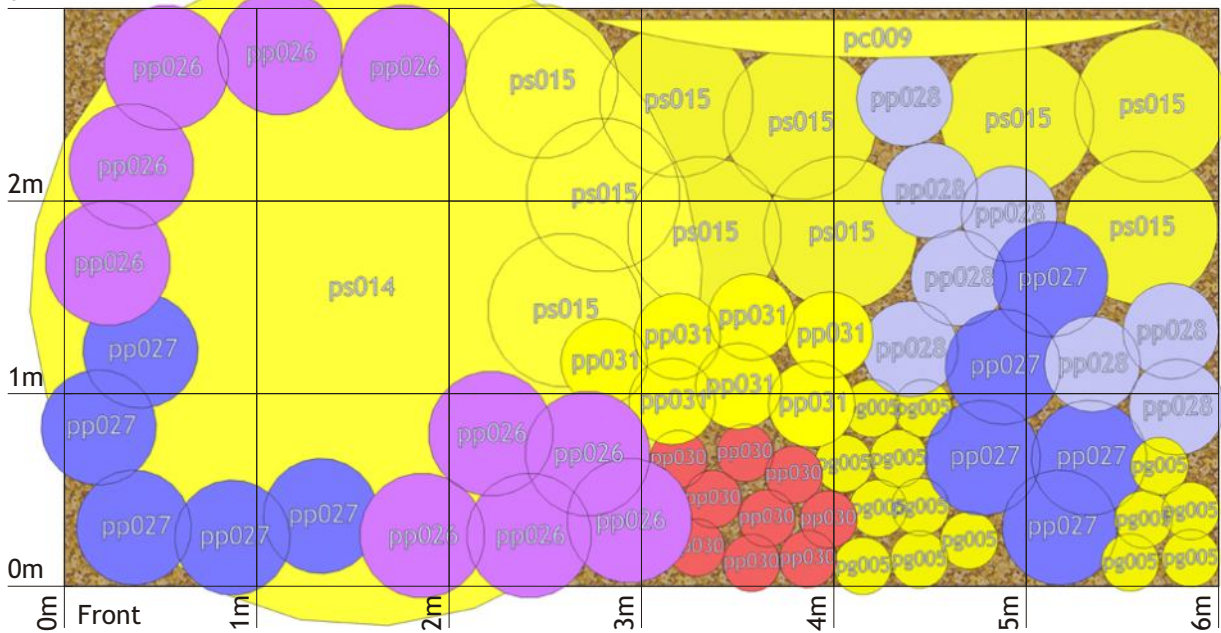
Use the Planting Plan to position your plants, and the table on the right to cross-refer to the separate Planting List on our website.

CLICK HERE to buy plants online for home delivery...

AG Code	Plant Common Name	Quantity
pc009	Firethorn	1
ps014	Mahonia	1
ps015	Barberry	10
pp026	Greater Periwinkle	10
pp027	Siberian Bugloss	10
pp028	Siberian Flag	8
pp030	Bishop's Hat	9
pp031	Black-eyed Susan	7
pg005	Bowles' Golden Grass	14

3m Back

Climber trained on fence, wall or trellis



your Planting Design

This border has been planned around future growth and spread. To use this design for smaller areas, starting from the bottom left-hand corner, draw your actual area onto the plan, and omit any plants outside this new size.

STYLE Classic Planting Design		SIZE 6m x 3m 1:10 Scale
SOIL TYPE Loam	SUNLIGHT Sun and Shade	REF. hd_scla_ss63lo_1

- ! Use the blanks in the table for any plant substitutions you make.
- ! Use the width & depth scale bars and grid to assist in positioning the plants.
- ! See the separate Planting List for more details on each of your plants.